



# ARCADE LEGENDS<sup>3</sup>

Owner's Manual



# ***CHICAGO GAMING COMPANY***

4616 W. 19th Street, Cicero, IL 60804 (708) 780-0070

# ARCADE LEGENDS 3™

Thank you for purchasing Chicago Gaming Company's Arcade Legends 3. You can look forward to many hours of video game enjoyment. We strongly recommend that you follow the instructions and procedures as presented in this Owner's Manual and that it be read in its entirety before setting up your game.

## 1. LEGAL INFORMATION

### 1.1 SAFETY PROCEDURES

The following guidelines will help protect you and your *ARCADE LEGENDS 3*.



Caution: For your safety follow these instructions.



Caution: Shock hazard if instructions are not followed.

- Read these instructions.
- Keep these instructions.
- Heed all warnings.
- Follow all instructions.
- Do not use this apparatus near water.
- Clean only with a dry cloth.
- Do not block any ventilation openings. Install in accordance with manufacturer's instructions.
- Do not install near any heat sources such as radiators, heat registers, stoves, or other apparatus (including amplifiers) that produce heat.
- Do not defeat the safety purpose of the polarized or grounding-type plug. A polarized plug has two blades with one wider than the other. A grounding type plug has two blades and a third grounding prong. The wide blade and third prong are provided for your safety. If the provided plug does not fit into your outlet, consult an electrician for replacement of the obsolete outlet.
- Protect the power cord from being walked on or pinched particularly at plugs, convenience receptacles, and the point where they exit from the apparatus.
- Only use attachments/accessories specified from the manufacturer.
- Unplug this apparatus during lightning storms or when unused for long periods of time.
- Refer all servicing to qualified personnel. Servicing is required when the apparatus has been damaged in any way, such as power supply cord or plug is damaged, liquid has been spilled or objects have fallen into the apparatus, the apparatus has been exposed to rain or moisture, does not operate normally, or has been dropped.
- Use with only 115 volts ~ 60Hz
- We recommend using a surge suppresser or UPS (Uninterruptible Power Supply) to safeguard the game from abrupt power spikes or losses.
- **WARNING:** To reduce the risk of fire or electric shock, do not expose your system to rain or moisture.

- Do not expose your system to dripping or splashing.
- Be sure to disconnect the power cable before working on the machine.
- Be sure to use fuses that meet the specified rating. (5A, 220V Quick-blow). Using fuses exceeding the specified rating can cause a fire and electrical shock.
- The game's monitor is a source of high voltage. Be **EXTREMELY CAREFUL** when working near it, high voltage charges can still be present even after you've unplugged the unit. **Have a qualified technician perform a monitor repair or replacement.**
- Optimum operating environment is between 50-105° Fahrenheit.

## 1.2 ATARI END USER LICENSE AGREEMENT

By accepting and operating an *Arcade Legends 3*, the owner (“**End User**”) of the unit agrees to abide by the terms of this agreement. Asteroids, Asteroids Deluxe, Battlezone, Black Widow, Centipede, Crystal Castles, Food Fight, Gravitar, Liberator, Lunar Lander, Major Havoc, Millipede, Missile Command, Red Baron, Space Duel, Super Break-Out, Tempest, Warlords and related logos are used under license from Atari Inc. (“**Atari**”). Atari expressly reserves the sole and exclusive ownership of the aforementioned games and all rights relating thereto. The end user hereby acknowledges that Atari is the sole and exclusive owner of the games and licensed trademarks and agrees not to challenge at any time, directly or indirectly, the rights of Atari. The end user agrees not to attempt to copy the licensed property (in whole or in part), decompile, disassemble or otherwise reverse engineer the software in any way. Atari is a third party beneficiary to this agreement and retains the right to bring action directly against an End User for breach of this End User License Agreement.

## 1.3 WARRANTY INFORMATION

All parts are warranted against manufacturing defects for a period of 180 days. Free telephone support is available for the life of the product.

# 2. GAME SETUP

## 2.1 INSTALLATION

- Remove the game from its packaging.
- When moving the unit, please treat it as delicately as possible. The monitor is fragile.
- Be sure to install it in a dry location.
- Plug the machine into a three-prong A/C outlet.
- Please note, the monitor may initially appear discolored, particularly in the monitor's corners. This discoloration will go away after it has been powered up a number of times. You will have to let the unit return to room temperature after each power cycle for the monitor's degaussing circuit to clear up this discoloration.

## 2.2 KEY FEATURES

The locations of the On/Off Switch, Service Button, and Display Adjustment Panel are shown in the illustration below.



**The Player 1 joystick is used to navigate the Game Select Screen and Service Menu**

**Player 1 and Player 2 buttons are used to start a single or two player game**

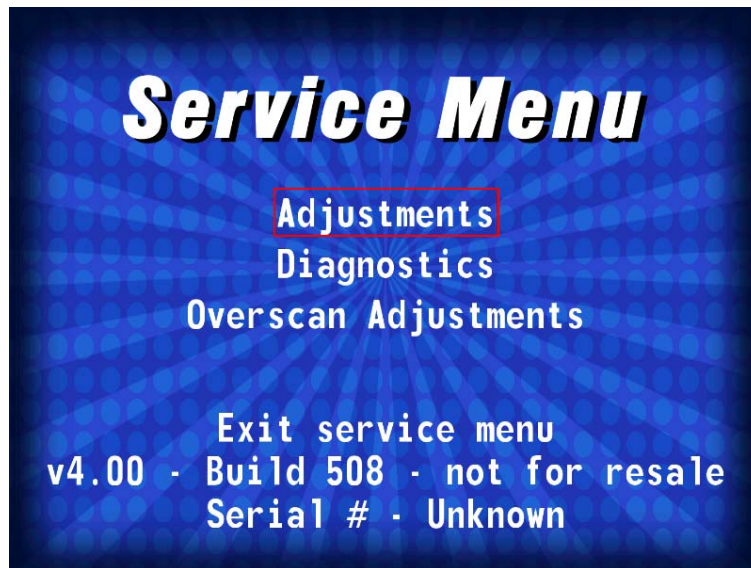
**Button 1 is used to make selections in the Service Menu**



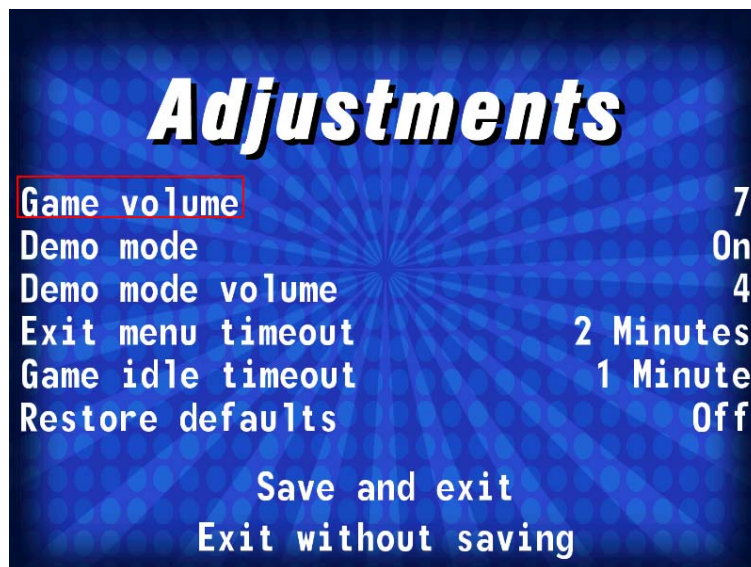
### 3. SERVICE MENU

Press the **SERVICE BUTTON**, which is located behind the faux coin-door, to access the **SERVICE MENU**. The test button can be accessed without opening the faux coin-door by pressing the coin-return button.

The **SERVICE MENU** provides access to the **ADJUSTMENTS** sub-menu and the **DIAGNOSTICS** sub-menu. To select either sub-menu, use the joystick on the Player One side (left joystick) to highlight either option, then press the button one (the upper left button in the cluster of six blue buttons) on the Player One side (left side).



#### 3.1 ADJUSTMENTS SUB-MENU



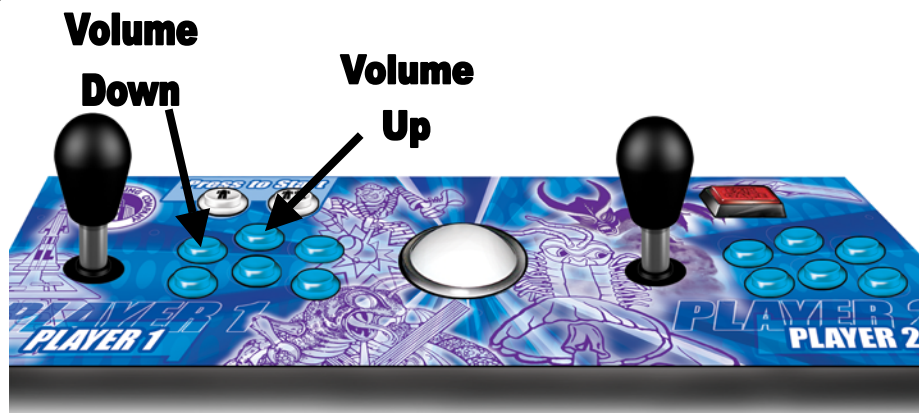
The volume settings, which are located on the **ADJUSTMENTS** menu, which is a sub-menu of the **SERVICE** menu, allow you to independently adjust game volume and the demo mode volume.

The **GAME VOLUME** setting determines the sound level while the games are being played.

The **DEMO MODE** setting turns Demo Mode on or off. When this is on, the main menu will cycle through the games, showing a 15 second video clip of each game it stops on.

The **DEMO MODE VOLUME** setting determines the sound level at the user interface while the unit is sitting idle (in Demo Mode).

To adjust either the **GAME VOLUME** or the **DEMO MODE VOLUME**, highlight the setting you wish to adjust and press button one or two on the **PLAYER 1** side of the control panel.



The **EXIT MENU TIMEOUT** setting determines how long the exit screen will stay up before automatically exiting back to the main menu.

The **GAME IDLE TIMEOUT** setting determines how long a game will keep running when nobody is using the controls. After one or two minutes of inactivity, Arcade Legends 3 will automatically return to the main menu.

The **RESTORE DEFAULTS** option will return all adjustments to the factory settings.

### 3.2 DIAGNOSTICS

The **DIAGNOSTICS** menu provides tools to confirm that the controls are functioning properly and test screens which will assist in adjusting the monitor.

To select either sub-menu, use the joystick on the Player One side (left joystick) to highlight either option, then press the button one (the upper left button in the cluster of six blue buttons) on the Player One side (left side).



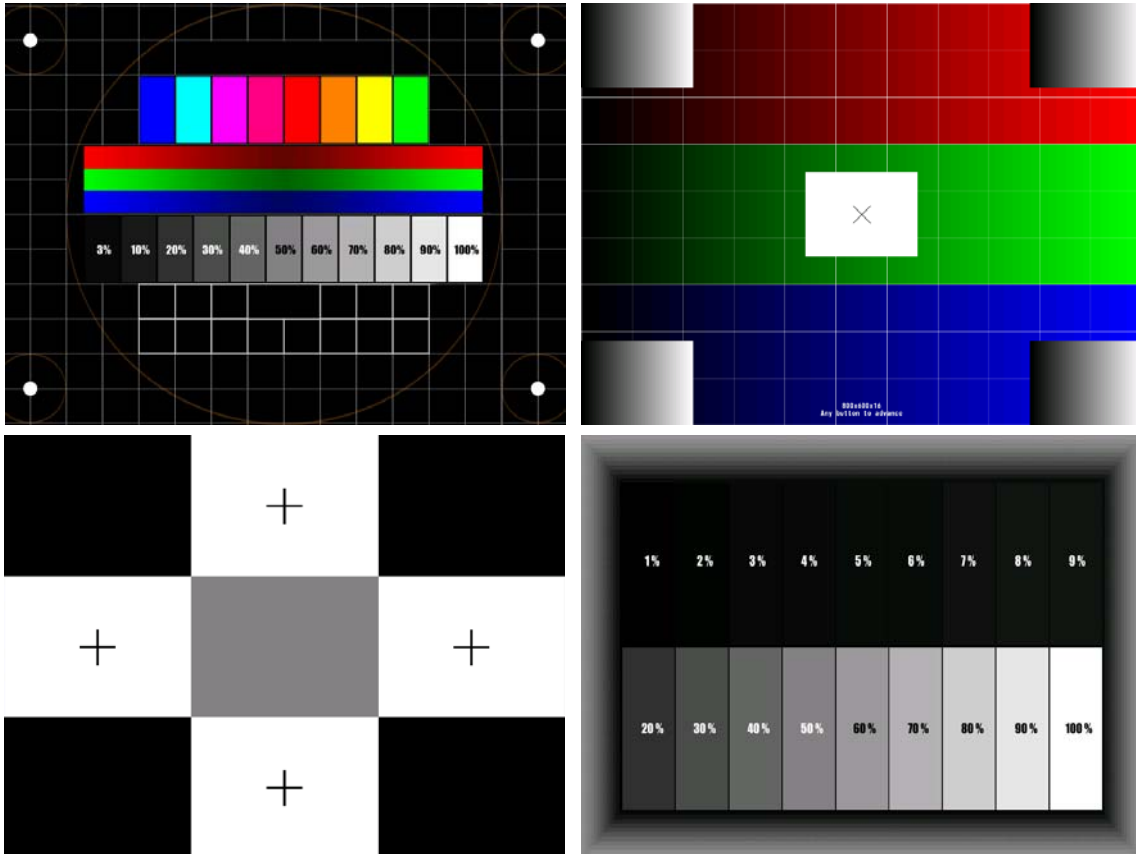
### 3.3 CONTROL TEST

The **CONTROL TEST** allows you to confirm the buttons, joysticks and trackballs are functioning correctly. Use of any of the controls should result in the display of the corresponding action on the monitor. Should any control cease to work contact technical support. Each of the controls can be replaced in a matter of minutes with only a phillips head screwdriver and a nut driver.



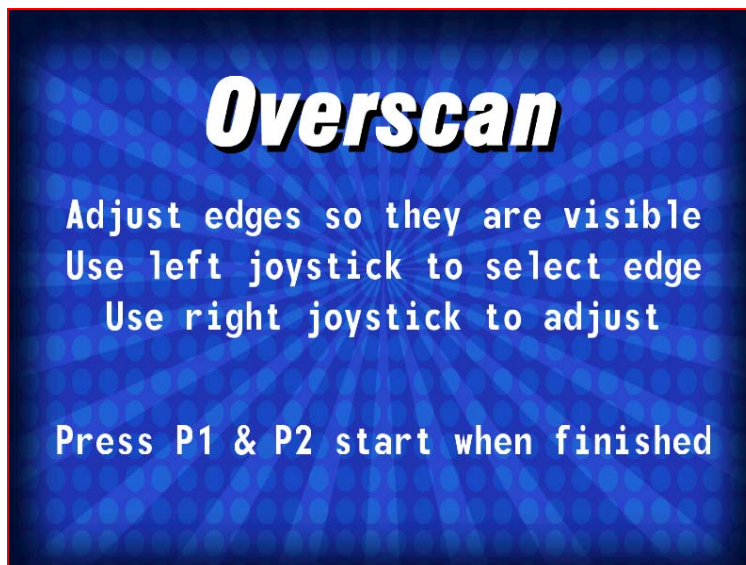
### 3.4 VIDEO TEST

This submenu provides test patterns, which assist in adjusting your monitor.



### 3.5 OVERSCAN ADJUSTMENTS

The **OVERSCAN ADJUSTMENTS** screen allows you to adjust the size of the displayed screen. This is a separate adjustment from the DISPLAY ADJUSTMENT PANEL, which can be found behind the coin door. Follow the onscreen instructions to adjust overscan.



## 4. SORTING GAMES AND SELECTING GAMES

The **SORT GAMES** column allows you to reduce the total number of games displayed in the **SELECT GAMES** column; thereby allowing you to quickly find a game. To view all one hundred and twenty-five games at the same time set the **SORT GAMES** column to **ALL GAMES**.

The **SORT GAMES** column is accessed by moving the **Player 1** Joystick right. Each subcategory is then selected by moving the Player 1 Joystick up or down. Once you have highlighted the category that you wish to select move the Player 1 joystick left to return to the **GAME SELECT MENU**.



To select a game, move the Player 1 joystick left to highlight the **SELECT GAME** column. Then move the Player 1 joystick up or down to highlight a game. Once you have highlighted the game that you wish to play, press the Player 1 start button if you wish to start a single player game or press the Player 2 button if you wish to start game for two players.



## 5. GAME CONTROLS INSTRUCTIONS

The **GAME CONTROLS** screen is displayed before the start of each game. This screen explains which controls are utilized in each game. To exit this screen before the default allotted time, press any button.



## 6. EXITING A GAME

To exit a game, press the **GAME EXIT** button, which is located on the upper right hand corner of the control panel. After exiting a game, you will be given the option to: **RETURN TO GAME**, **EXIT GAME**, or **ADD** or **REMOVE FROM FAVORITES**.



## 7. TECHNICAL SUPPORT

Free telephone support is provided for the *Arcade Legends 3* system. Technical Support is available from 9:00-5:00 Central Time, Monday through Friday. Call (708)780-0070. Select technical support in phone system menu.

## 8. GAMEPACK (UPGRADES)

Please note that *Arcade Legends 3* is not compatible with UltraCade/Global VR gamepacks. UPGRADES FOR ARCADE LEGENDS OR ARCADE LEGENDS 2 WILL NOT WORK WITH ARCADE LEGENDS 3!!!

Please check [www.chicago-gaming.com](http://www.chicago-gaming.com) for availability.

## 9. FCC COMPLIANCE

**Note:** This equipment has been tested and found to comply with the limits for a Class B digital device, pursuant to Part 15 of the FCC Rules. These limits are designed to provide reasonable protection against harmful interference in a residential installation. This equipment generates, uses and can radiate radio frequency energy and, if not installed and used in accordance with the instructions, may cause harmful interference to radio communications. However, there is no guarantee that interference will not occur in a particular installation. If this equipment does cause harmful interference to radio or television reception, which can be determined by turning the equipment off and on, the user is encouraged to try to correct the interference by one of more of the following measures:

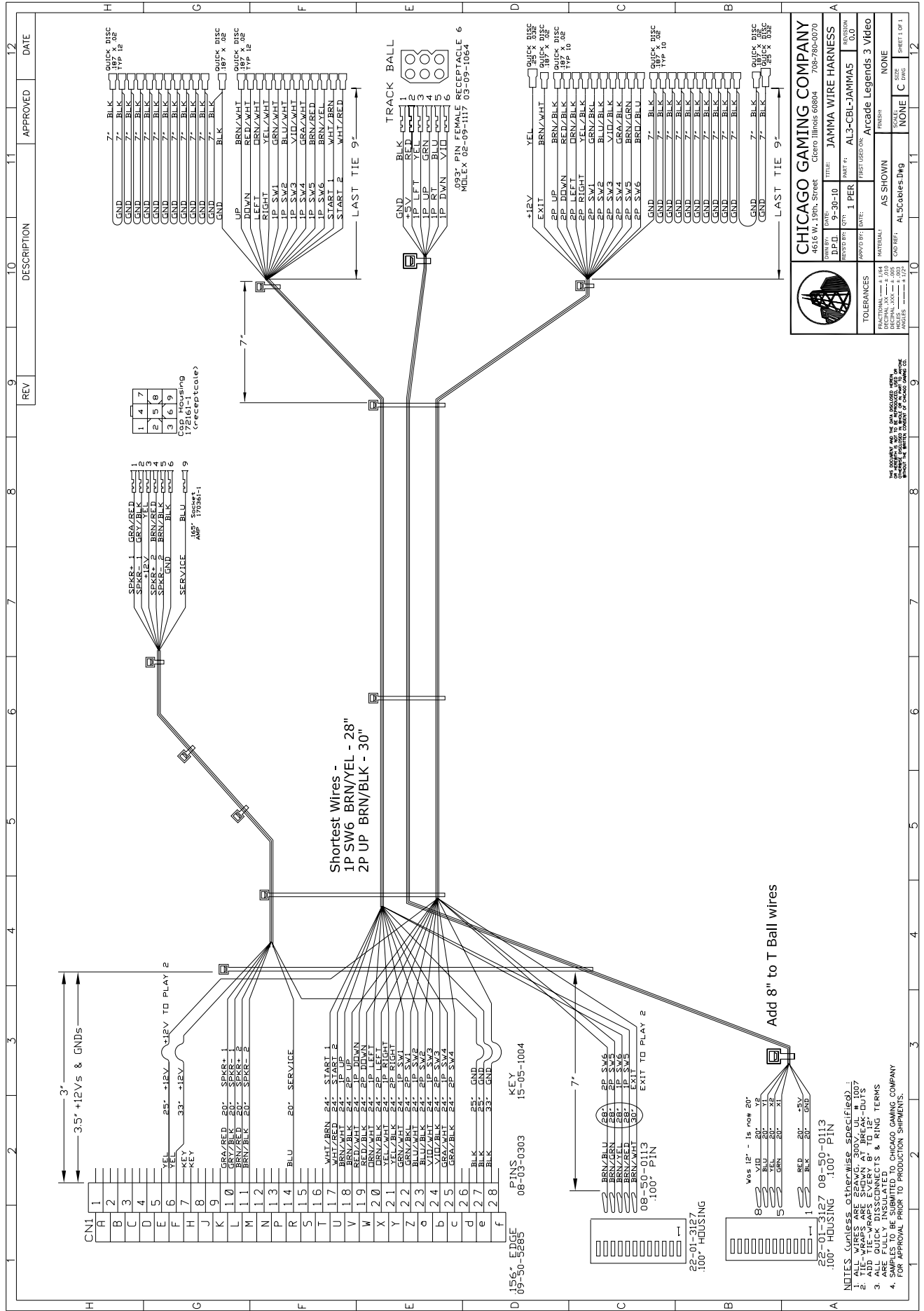
--Reorient or relocate the receiving antenna.

--Increase the separation between the equipment and receiver.

--Connect the equipment into an outlet on a circuit different from that to which the receiver is connected.

--Consult the dealer or an experienced radio/technician for help.

Changes or modifications not expressly approved in writing by Chicago Gaming Company could void the user's authority to operate the product.



REV	DESCRIPTION	APPROVED	DATE

NO.	DESCRIPTION
1	SEKR-1 GRAY/BLK
2	SEKR-2 BRN/BLK
3	SEKR-3 BRN/BLK
4	SEKR-4 BRN/BLK
5	SEKR-5 BRN/BLK
6	SEKR-6 BRN/BLK
7	SEKR-7 BRN/BLK
8	SEKR-8 BRN/BLK
9	SEKR-9 BRN/BLK

NO.	DESCRIPTION
1	QUICK DISC 187 X 102
2	QUICK DISC 187 X 102
3	QUICK DISC 187 X 102
4	QUICK DISC 187 X 102
5	QUICK DISC 187 X 102
6	QUICK DISC 187 X 102
7	QUICK DISC 187 X 102
8	QUICK DISC 187 X 102
9	QUICK DISC 187 X 102

NO.	DESCRIPTION
1	QUICK DISC 187 X 102
2	QUICK DISC 187 X 102
3	QUICK DISC 187 X 102
4	QUICK DISC 187 X 102
5	QUICK DISC 187 X 102
6	QUICK DISC 187 X 102
7	QUICK DISC 187 X 102
8	QUICK DISC 187 X 102
9	QUICK DISC 187 X 102

NO.	DESCRIPTION
1	QUICK DISC 187 X 102
2	QUICK DISC 187 X 102
3	QUICK DISC 187 X 102
4	QUICK DISC 187 X 102
5	QUICK DISC 187 X 102
6	QUICK DISC 187 X 102
7	QUICK DISC 187 X 102
8	QUICK DISC 187 X 102
9	QUICK DISC 187 X 102

NO.	DESCRIPTION
1	QUICK DISC 187 X 102
2	QUICK DISC 187 X 102
3	QUICK DISC 187 X 102
4	QUICK DISC 187 X 102
5	QUICK DISC 187 X 102
6	QUICK DISC 187 X 102
7	QUICK DISC 187 X 102
8	QUICK DISC 187 X 102
9	QUICK DISC 187 X 102

**CHICAGO GAMING COMPANY**  
4616 W. 151st. Street  
Cicero Illinois 60804

**JAMMA WIRE HARNESS**

DATE: 9-30-10  
D.P.D.:  
REVISED BY: I PER  
APPROVED BY: AS SHOWN  
ARTICLE: AL3-CBL-JAMMAS  
REVISION: NONE  
SCALE: NONE  
SHEET 1 OF 1

TOLEANCES:  
DIMENSIONS: ±.010  
HOLE DIA: ±.005  
HOLE LOC: ±.010  
ANGLES: ±.2°

NOTES:  
1. ALL DIMENSIONS ARE TO BE PRODUCED UNLESS OTHERWISE SPECIFIED.  
2. ALL DIMENSIONS ARE TO BE PRODUCED UNLESS OTHERWISE SPECIFIED.  
3. ALL DIMENSIONS ARE TO BE PRODUCED UNLESS OTHERWISE SPECIFIED.  
4. ALL DIMENSIONS ARE TO BE PRODUCED UNLESS OTHERWISE SPECIFIED.

3.5" ±12Vs & GNDs

28" 2P SW6  
29" 2P SW5  
30" 2P SW4  
31" 2P SW3  
32" 2P SW2  
33" 2P SW1  
34" 2P SW0  
35" 2P SW0

WAS 12" - IS NOW 20"

1 2P SW6  
2 2P SW5  
3 2P SW4  
4 2P SW3  
5 2P SW2  
6 2P SW1  
7 2P SW0  
8 2P SW0

22-01-3127 08-50-0113  
100" HOUSING 100" PIN

NOTES:  
1. UNLESS OTHERWISE SPECIFIED;  
2. TEL-WRAPS ARE SHOWN AT BREAK-OUTS;  
3. ADD QUICK CONNECTS & RING TERMS  
4. ARE FULLY INSULATED  
5. SAMPLES TO BE SUBMITTED TO CHICAGO GAMING COMPANY FOR APPROVAL PRIOR TO PRODUCTION SHIPMENTS.

