



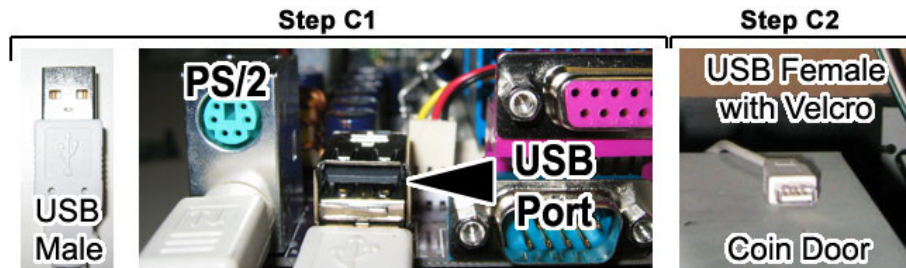
## Arcade Legends USB Game Pack Key Installation Guide

The Arcade Legends USB Game Pack Key is an easy way to install add-on Game Packs on your system. Please be aware that once you install the USB Game Pack Key on an Arcade Legends system, the USB Game Pack Key will lock itself to that system. This prevents the USB Game Pack Key from being used on multiple Arcade Legends systems.

### Step A: Check the USB Cable

Your new Game Pack comes with a USB extension cable that will make it easier to install this and future USB Game Pack Keys. Your Arcade Legends cabinet may already have a USB extension cable installed; open the coin door and check inside. If you find a USB cable inside the coin door, skip to *Step-B Install the Game(s)*.

1. Plug the male end of the USB cable into an open USB port on the Arcade Legends computer. The arrow in *Step C1* shows a typical USB port. **Do not** unplug any other USB cable connected to the computer, as this is used for the USBlinx™ I/O card.
2. Run the cable through the cabinet to the front where it can be accessed through the coin door opening. Attach the female end of the cable to the metal plate using the pre-attached Velcro®.



### Step B: Install the Game(s)

Follow the steps below to install the new games on your Arcade Legends system:

1. Make sure your Arcade Legends cabinet is powered ON and running the attract mode. Plug the USB Game Pack Key into the female end of the USB extension cable inside the Coin Door.
2. The Arcade Legends system will automatically detect the USB Game Pack Key and copy the games to the hard drive.
3. Once the installation is complete, remove the Game Pack Key and keep it in a safe place. Your new games are installed and ready to play!



#### For Software Support, Contact:

<http://service.globalvr.com>  
techsupport@globalvr.com  
Phone: 408.597.3435  
Fax: 408.597.3437

#### For Hardware Support, Contact:

Chicago Gaming Company  
4616 W. 19th Street  
Cicero, IL 60804  
Phone: 708.780.0070